



# The Disciple NEWSLETTER

First Christian Church Olathe  
Disciples of Christ

February 2022



## Love Remains Special Offering ~ February 20th & 27th

*And now these three remain: faith, hope and love. But the greatest of these is love. ~1 Corinthians 13:13*

Week of Compassion is the relief, refugee, and development mission fund of the Christian Church (Disciples of Christ). Your gifts to Week of Compassion bring hope out of despair, find blessings amid devastation, and help transform loss into new life. Your contributions bring tangible relief and change the course of lives. When you give, you help rebuild communities recovering from disaster. You also empower farmers to grow new kinds of crops in a changing climate; you support refugees; you empower youth through education, and empower women through vocational opportunities. In so many different ways, your gifts of love have the power to transform lives. Love is shelter. Love is a listening ear. Love is community. Love is a hopeful future. Love is a path forward. When all else seems lost, love remains.

There are 3 ways to give to Week of Compassion.

Make your check to FCC and mark the memo: Week of Compassion and/or use a Week of Compassion envelope.

Give online through FCC by going to our website ([firstchristianolathe.org](http://firstchristianolathe.org)). Check the Week of Compassion box by using the drop down menu under "add gift".

Go directly to [weekofcompassion.org](http://weekofcompassion.org) to give online.

## Worship - Gospel of John

**Who does Jesus meet and what do they need from him?**

January 30: John 4:1-42, Meeting a Woman at a Well

February 6: John 4:46-54, Healing the son of a Government Official

**How does Jesus reveal the presence of God?**

February 13: John 6:35-59, Bread of Life

February 20: John 7:37-52, Living Water

February 27: John 9:1-41, Light



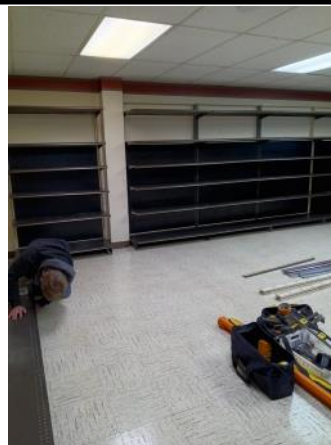


Join us for Boy Scout Sunday. The scouts will lead us in worship. After worship they will serve a chili and cinnamon roll lunch to the congregation. All are welcome! We hope you will plan to stay after worship and enjoy conversation and a meal with these gentlemen. They are a great group of kids, led by a great group of leaders.

# Boy Scout Sunday



**February 13th**



Transformation of one of our Food Pantry rooms! Thanks to Chuck Drews for getting the grocery shelving! Thanks to all the volunteers who worked to put it together!

## Let's Gather & Create Together...

*For Laughter, Fellowship and Lots of Fun!*



### **Bizarre Ladies Craft Group**

Wednesday's at 9:30 AM  
Fellowship Hall

Bring a friend!



Questions? Linda Dutton 913-954-7262, Betty Drews 913-686-1019

**MEN'S BREAKFAST**  
**February 26th**  
**8:30 AM**

**Join us!**

**First Watch**  
**1177 W Santa Fe St,**  
**Olathe, KS 66061**

**See Chuck Drews for questions**

**FIRST CHRISTIAN CHURCH**  
**BIRTHDAYS AND ANNIVERSARIES**

DATE	BIRTHDAYS	ANNIVERSARIES
Feb 03	Dean Bonawitz	
Feb 04	Debby Geisinger	
Feb 05	Bob Bing	
Feb 09		Chris & Sammye Phelps
Feb 12		David & Connie Peterson
Feb 14	Sherril Benson	
Feb 15	Nancy Gibson	Archie & Margo Brashears
Feb 19	Kimberlee Towner	
Feb 20	Blake Traylor	
Feb 21	Nathan Heyes	
Feb 24		Charles & Coke Fellenstein
Feb 26	Sarah Darr	

**Contemplative Community**  
**Gathering**

**Sunday, February 27**

**3:00 PM – 4:30PM**

**First Christian Church Sanctuary**  
**200 E Loula Street**

Our gathering this month will be led by Rev. Connie Wilson, retired Methodist clergy, and will focus on embodied spirituality as a contemplative practice.

Connie will teach us the basics of this contemplative practice and then will lead us in a time of engaging the practice.

I look forward to this Sacred Space in which to catch my breath and pause for a moment in this very busy world.

I invite you to join me. All are welcome.

Pastor Sherry

**Finance**

**Stewardship & Finance**

For the past four years, FCC Olathe has been intentional about stewardship and the financial health of our ministry. In 2020 we celebrated ending the year with a strong financial foundation for the year ahead. As you can see from our Financial report, we also celebrate the 2021 year end!

Our general fund giving in 2021 was up 5.5% from 2020 because of your generous and faithful giving of financial resources! Thank you for making it possible for ministry to flourish as we engage our community with the transforming love of God.

**Financial** DECEMBER

General Fund	December 2021	YTD 2021
Giving	21,135	189,142
Expenses	17,344	184,445
Surplus / Shortfall	3,791	4,697

# Adult Learning Opportunities



**Sunday, 8:30 AM, led by Elaine Bagley, in the Fellowship Hall  
Current Study - Thessalonians**

**Tuesday, 11:00 AM, led by Pastor Sherry, in the Fellowship Hall  
Wednesday, 6:00 PM, led by Pastor Sherry, by Zoom  
Current Study - Gospel of John**

Three small groups meet for Bible Study each week. You are welcome to find your place at the table of any of these groups. The goal is always to study scripture in a way that shapes our lives as followers of Jesus.





## Reminder

- Bizarre Ladies - Wednesday - 9:30 AM (FH)
- Choir Practice - Thursday - 6:30 PM (Choir Room)
- February 13 - Boy Scout Sunday—Worship/FH
- February 20 - Elder's Meeting (Zoom)
- February 21 - Steward. & Fin. Mtg - 6:30 PM (208)
- February 22 - Board Meeting - 7:00 PM (FH)
- February 26 - Men's Breakfast - 8:30 AM
- February 27 - Contemplative Community - 3:00 PM






**FIRST CHRISTIAN CHURCH**  
DISCIPLES OF CHRIST  
200 E. LOULA, OLATHE, KS 66061

Pastor Sherry McGlaughlin  
[pastorsherryfcc@gmail.com](mailto:pastorsherryfcc@gmail.com)   
Cell phone 816-916-5524 

Organist / Bells Director  
Vicki Penny

Choir Director  
Dave Farris

Kimberlee Towner  
[fccolathe@gmail.com](mailto:fccolathe@gmail.com)   
office 913-764-3555   
[firstchristianolathe.org](http://firstchristianolathe.org)   
[fccolathe](http://fccolathe) 